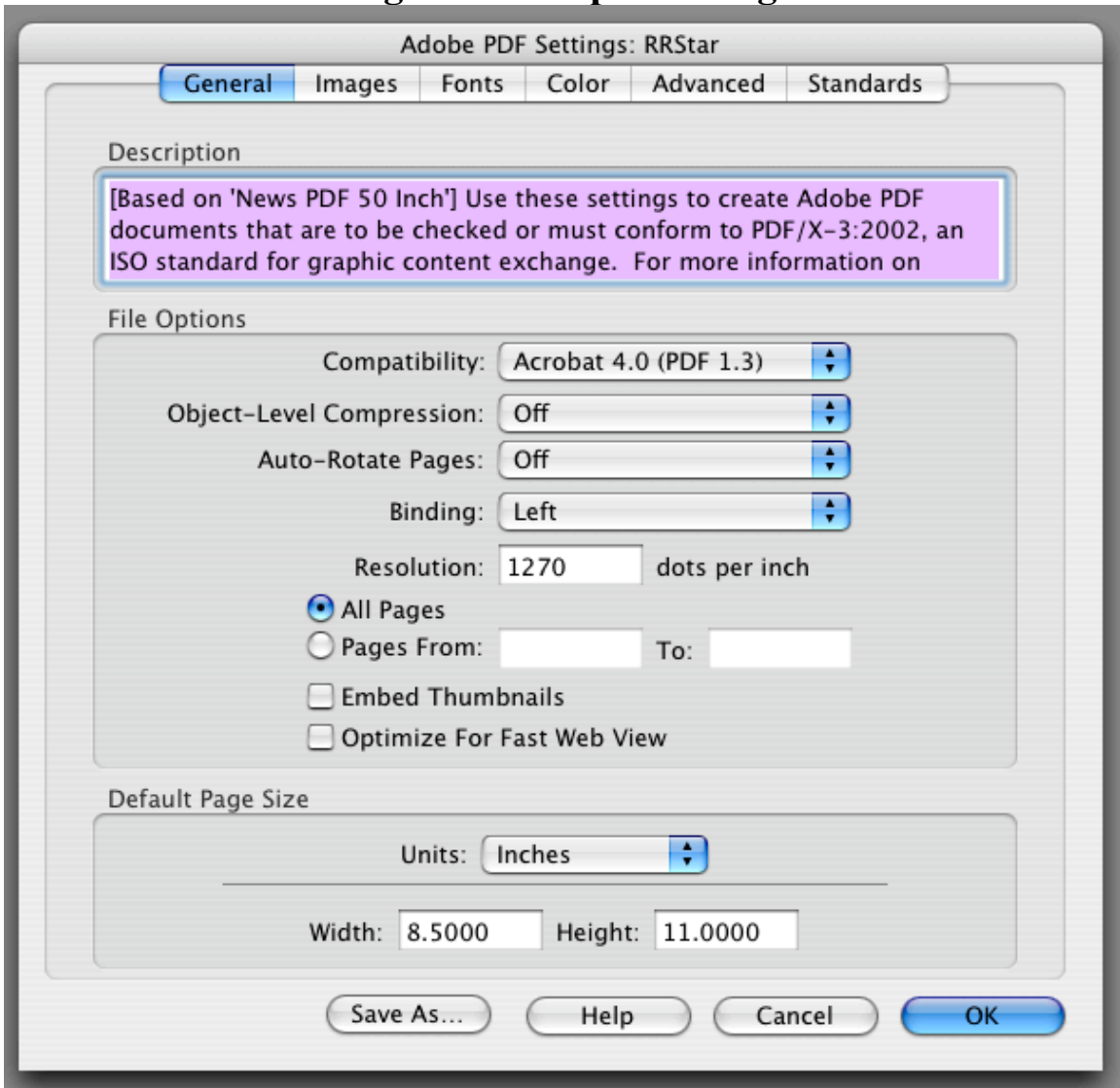


Register Star .pdf settings



Adobe PDF Settings: RRStar

General **Images** Fonts Color Advanced Standards

Color Images

Sampling: Bicubic Downsampling to 240 pixels per inch
for images above: 360 pixels per inch

Compression: Automatic (JPEG)

Image Quality: Maximum

Grayscale Images

Sampling: Bicubic Downsampling to 240 pixels per inch
for images above: 360 pixels per inch

Compression: Automatic (JPEG)

Image Quality: Maximum

Monochrome Images

Sampling: Bicubic Downsampling to 1270 pixels per inch
for images above: 1905 pixels per inch

Compression: CCITT Group 4

Anti-Alias to gray: Off

Policy

Save As...


Help

Cancel

OK

Adobe PDF Settings: RRStar

General Images **Fonts** Color Advanced Standards

- Embed all fonts
- Embed OpenType fonts
- Subset embedded fonts when percent of characters used is less than: %
-  Only fonts with appropriate permission bits will be embedded

When embedding fails: Warn and continue

Embedding

/Users/kala/Library/Fonts

- Font Source
- AbadiMT-
 - AbadiMT-CondensedLight
 - AndaleMono
 - Arial-Black
 - Arial-BoldItalicMT
 - Arial-BoldMT
 - Arial-ItalicMT
 - ArialMT
 - ArialNarrow
 - ArialNarrow-Bold
 - ArialNarrow-BoldItalic
 - ArialNarrow-Italic
 - ArialRoundedMTBold
 - BaskOldFace

Add->

Add->

Always Embed Font

Never Embed Font

Add Name...

Remove

Save As...

Help

Cancel

OK

Adobe PDF Settings: RRStar

General Images Fonts **Color** Advanced Standards

Adobe Color Settings

Settings File: None

Color Management Policies

Leave Color Unchanged

Document Rendering Intent: Preserve

Working Spaces

Gray: Dot Gain 20%

RGB: sRGB IEC61966-2.1

CMYK: U.S. Web Coated (SWOP) v2

Preserve CMYK values for calibrated CMYK color spaces

Device-Dependent Data

Preserve Under Color Removal and Black Generation

When transfer functions are found: Apply

Preserve Halftone Information

Save As...

Help

Cancel

OK

Adobe PDF Settings: RRStar

General Images Fonts Color **Advanced** Standards

Options

- Allow PostScript file to override Adobe PDF Settings
- Allow PostScript XObjects
- Convert gradients to smooth shades
- Convert smooth lines to curves
- Preserve Level 2 copypage semantics
- Preserve Overprint Settings
 - Overprinting default is nonzero overprinting
- Save Adobe PDF Settings inside PDF file
- Save original JPEG images in PDF if possible
- Save Portable Job Ticket inside PDF file
- Use Prologue.ps and Epilogue.ps
- Create Job Definition Format (JDF) file

Document Structuring Conventions (DSC)

- Process DSC comments
 - Log DSC warnings
 - Preserve EPS information from DSC
 - Preserve OPI comments
 - Preserve document information from DSC
 - Resize page and center artwork for EPS files

Save As...

Help

Cancel

OK

Adobe PDF Settings: RRStar

General Images Fonts Color Advanced Standards

Standard Reporting and Compliance

Compliance Standard: None

When not compliant: Continue

If Neither TrimBox nor ArtBox are Specified

- Report as error
- Set TrimBox to MediaBox with offsets (Inches):

Left: 0 Right: 0 Top: 0 Bottom: 0

If BleedBox is Not Specified

- Set BleedBox To MediaBox
- Set BleedBox To TrimBox with offsets (Inches):

Left: 0 Right: 0 Top: 0 Bottom: 0

Default Values if Not Specified in the Document

Output Intent Profile Name: No Default Profile ?

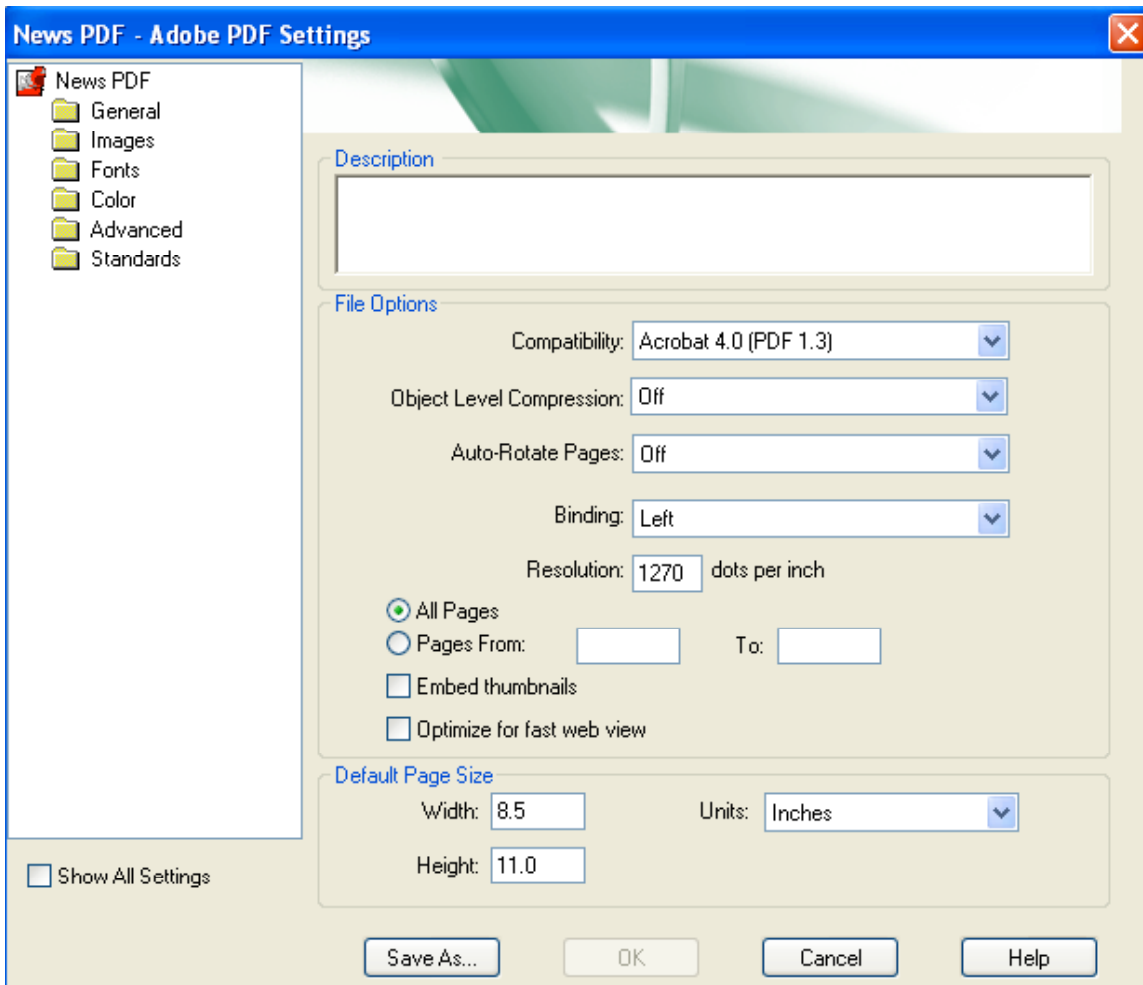
Output Condition Identifier: ?

Output Condition: ?

Registry Name(URL): ?

Trapped: Insert False ?

Save As... Help Cancel OK



News PDF - Adobe PDF Settings



- News PDF
 - General
 - Images
 - Fonts
 - Color
 - Advanced
 - Standards

Color Images

Downsample: Bicubic Downsampling to 240 pixels per inch
for images above: 360 pixels per inch
Compression: Automatic (JPEG)
Image Quality: Maximum

Grayscale Images

Downsample: Bicubic Downsampling to 240 pixels per inch
for images above: 360 pixels per inch
Compression: Automatic (JPEG)
Image Quality: Maximum

Monochrome Images

Downsample: Bicubic Downsampling to 1270 pixels per inch
for images above: 1905 pixels per inch
Compression: CCITT Group 4
Anti-alias to gray: Off

Show All Settings

Policy

Save As...

OK

Cancel

Help

News PDF - Adobe PDF Settings



- News PDF
 - General
 - Images
 - Fonts
 - Color
 - Advanced
 - Standards

Embed all fonts
 Embed OpenType fonts
 Subset embedded fonts when percent of characters used is less than: %
 Only fonts with appropriate permission bits will be embedded
When embedding fails:

Embedding

Font Source:

-
- AdobeArabic-Bold
 - AdobeArabic-BoldItalic
 - AdobeArabic-Italic
 - AdobeArabic-Regular
 - AdobeHebrew-Bold
 - AdobeHebrew-BoldItalic
 - AdobeHebrew-Italic
 - AdobeHebrew-Regular
 - AdobePiStd
 - AdobeSansMM
 - AdobeSerifMM
 - AdobeThai-Bold
 - AdobeThai-BoldItalic
 - AdobeThai-Italic
 - AdobeThai-Regular

Add -->

Add -->

Always Embed:

- AdobePiStd
- AdobeSansMM
- AdobeSerifMM
- AgencyFB-Bold
- AgencyFB-Reg
- AJensonPro-Semibold
- Algerian

Never Embed:

-

Add Name...

Remove

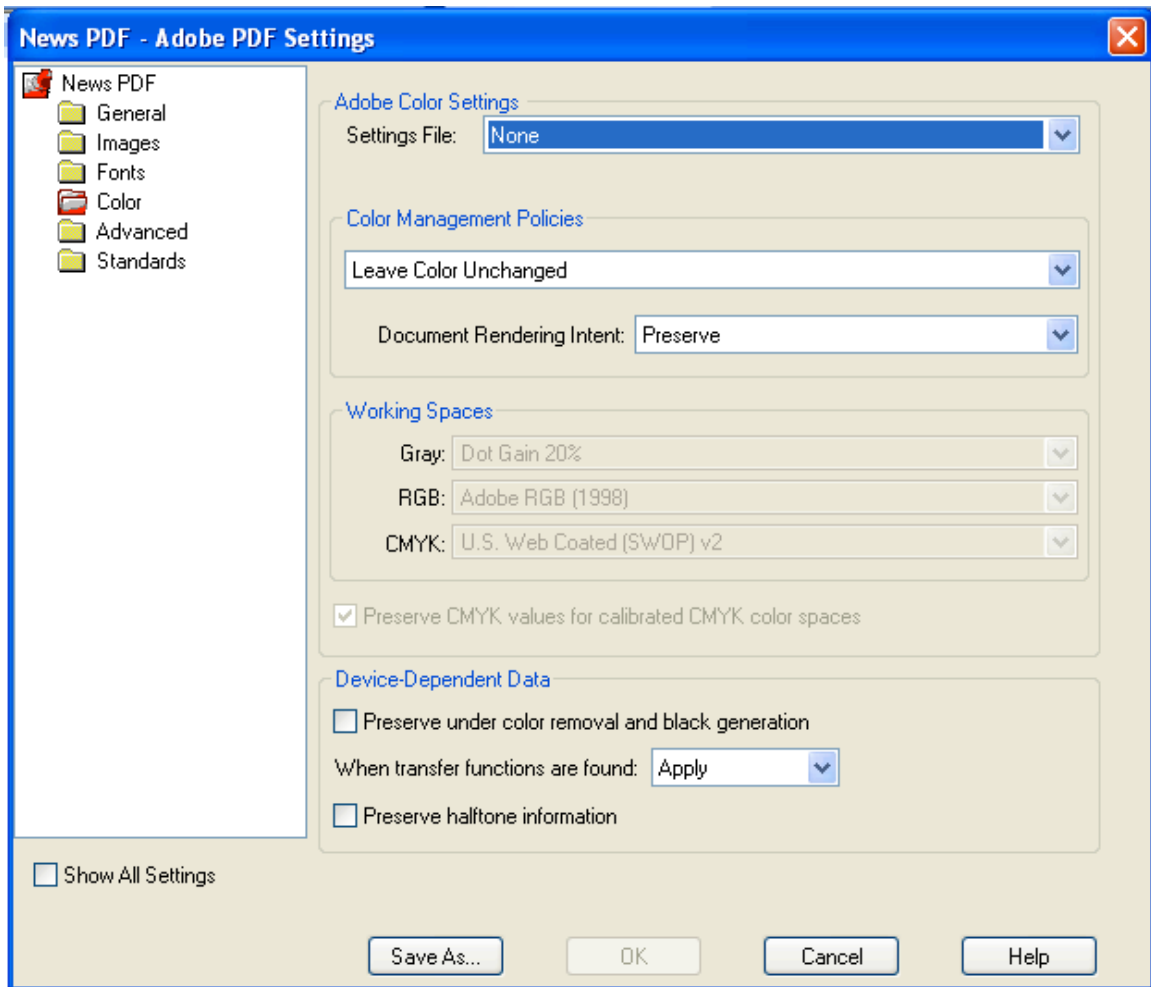
Show All Settings

Save As...

OK

Cancel

Help



News PDF - Adobe PDF Settings



- News PDF
 - General
 - Images
 - Fonts
 - Color
 - Advanced
 - Standards

Options

- Allow PostScript file to override Adobe PDF settings
- Allow PostScript XObjects
- Convert gradients to smooth shades
- Convert smooth lines to curves
- Preserve Level 2 copypage semantics
- Preserve overprint settings
 - Overprinting default is nonzero overprinting
- Save Adobe PDF settings inside PDF file
- Save original JPEG images in PDF if possible
- Save Portable Job Ticket inside PDF file
- Use Prologue.ps and Epilogue.ps
- Create Job Definition Format (JDF) file

Document Structuring Conventions (DSC)

- Process DSC comments
 - Log DSC warnings
- Preserve EPS information from DSC
- Preserve DPI comments
- Preserve document information from DSC
- Resize page and center artwork for EPS files

Show All Settings

Save As...

OK

Cancel

Help

